

Spot Repairs

This method can be used for repairing existing non-skid surfaces.



For Success:

- ◆ Apply Wax
- ◆ Apply Wax
- ◆ Apply Wax

Before You Start



1a. Apply wax in and around damaged area. Extend out several inches so excess gelcoat doesn't stick to surrounding surface.

1b. Buff out with a brush.

1c. Polish with a rag.
Note: A thorough and effective release is imperative.

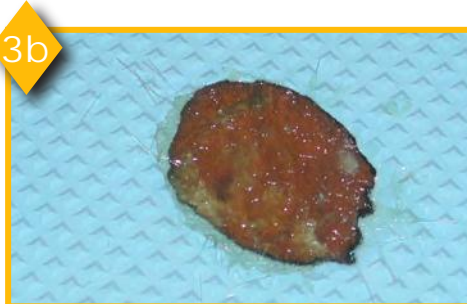


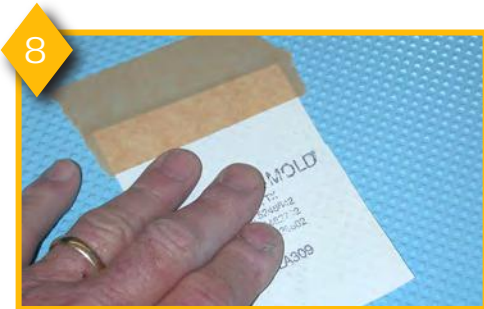
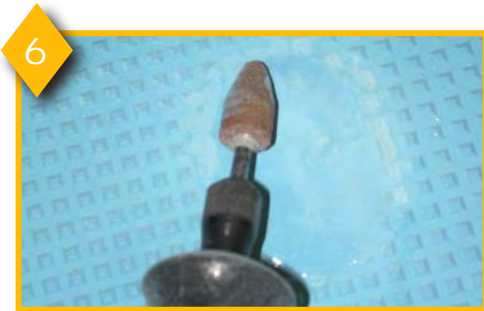
2. Rout out damaged area to solid material.

3ab. Fill area with appropriate filler and let cure.

4. Rout out again just below base of pattern to allow a second fill with color matched gelcoat.

5. Fill with color match and let cure.





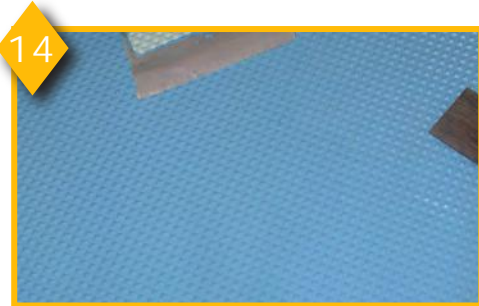
6. With router cut raised portion of pattern down to its base around the outside perimeter. This will give you a depth gauge by which to rout and sand out the center of the damaged area.

7. Use a small block and 100 to 80 grit sandpaper to level out and cut proper depth of the damaged area.

8. Cut FLEX-MOLD large enough to leave at least 1" (25mm) or better overlap of repair area. Place over repair area and move around until you feel it mesh into existing patterns. When FLEX-MOLD is properly placed and depth of area is correct, you should be able to run your hand over FLEX-MOLD and it will feel flat and level, not being able to detect cut out area.

9. With FLEX-MOLD in place, tape down one edge to hold firmly in position. Place squeegee into position. Pull FLEX-MOLD back and pour gelcoat against FLEX-MOLD and with stick push it under and across full width as not to trap any air bubbles. Gelcoat may need to be thinned for proper repair.

10abc. Use moderate pressure on squeegee and push wave of gelcoat across and into repair area. Hold FLEX-MOLD up high enough as you proceed as to not cup any air in cavities of pattern.



11. Once FLEX-MOLD is down, drag squeegee over it, two or three times with firm pressure.
12. Let cure and remove FLEX-MOLD.
- 13ab.
Use a piece of Formica, Plexiglas, hardwood stick and or blow gun to remove excess gelcoat from the pre-waxed surface around the repair area.
14. If done properly, color match is good and the pattern blends itself to a good match up, a near perfect repair will result.

Epoxy and other two-part chemically cured materials can be used.

***Many types of liquid wax or polymer release agents will work.
Some waxes will yellow and should be removed with an appropriate
solvent after repair is complete.***

ANOTHER METHOD

1



When a section may not have a good straight edge, you can secure the FLEX-MOLD and start process in a more suitable place.

2



Press FLEX-MOLD down with a squeegee, apply gelcoat and start process.

3



After initial squeegee out, press squeegee down to hold a seal as you pull off the tape.

4a



Start process again on remainder and finish.

4b



5



Go back over and carefully squeegee entire area.

The FLEX-MOLD is coated with green polyvinyl alcohol (PVA), or purple cover all coating, to serve as a release agent as well as a barrier coat that prevents a chemical reaction that will occur between the FLEX-MOLD and gelcoat, resulting in a distorted pattern.

The FLEX-MOLD can be used repeatedly as long as the PVA coating is intact. Once PVA has begun to come off the FLEX-MOLD, wash remaining PVA off with water. Let FLEX-MOLD dry and reapply PVA with a spray gun by misting on about six coats.